



Viewings by appointment  
0207 483 2611

abbey  
properties



# Fairhazel Gardens, NW6 3SH

£3,150 \*fees apply



Set within the characterful red-brick Fairhazel Mansions, this generously sized two-bedroom, two-bathroom apartment offers over 1,000 sq ft of well-arranged living space in one of South Hampstead's most desirable tree-lined streets.

The property features a large bay-fronted principal bedroom with fitted wardrobes and en-suite, a second double bedroom, and a bright reception room leading to a modern open-plan kitchen. Large windows throughout provide pleasant garden outlooks, while the layout offers flexible zones for living, dining and home working. Ideally positioned for the boutiques, cafés and transport links of both West Hampstead and Finchley Road, the home combines period charm with excellent convenience.

## Key Features

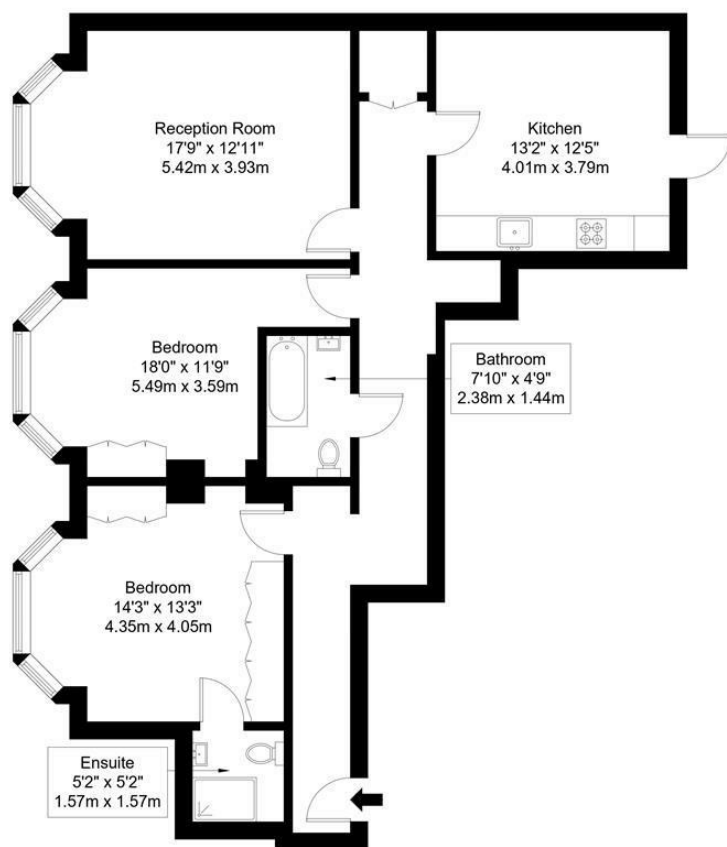
- Spacious two-bedroom, two-bathroom apartment
- Over 1,000 sq ft of internal space
- Bay-fronted principal bedroom with en-suite
- Separate reception room with generous proportions
- Modern open-plan kitchen with good storage
- Large windows with leafy outlooks
- Located in sought-after Fairhazel Mansions
- South Hampstead, NW6
- Nearest Station South Hampstead Overground – approx. 4 minutes' walk

Our agency are members of Property Mark, Client Money Protection and we hold an account with the Deposit Protection Scheme (ID number 1870974). Our trading name & registered office address is Wellington Estates Property Ltd, WorkLife, 174 Hammersmith Rd, London, W6 7JP company registration number 097780197. We charge no



abbey  
properties

Approx Gross Internal Area = 94.5 sq m / 1017 sq ft



Ref :

Copyright **BLEU**  
**PLAN**

The Floor plan is not to scale and measurements and areas shown are approximate and therefore should be used for illustrative purposes only. The plan has been prepared in accordance with the RICS code of Measuring Practice and whilst we have confidence in the information produced it must not be relied on. Maximum lengths and widths are represented on the floor plan. If there is any aspect of particular importance, you should carry out or commission your own inspection of the property.

Copyright © BleuPlan

